

FastGene® Prestained Protein Marker (15-130 kDa)

Cat. No.: MWP01

Volume: 500 µl

Size range: 15-130 kDa

Number of bands: 7

Recommended Load: 3-5 µl / well

Do not heat, dilute and/or add reducing agent before loading.

Description

The FastGene® Prestained Protein Marker (15-130 kDa) is a cutting-edge solution designed to streamline your protein analysis. With five distinct colors, this marker offers effortless size recognition, ensuring accurate and efficient identification of molecular weights on your SDS-PAGE gels and Western Blot membranes.

Storage Buffer

The storage buffer contains:

20 mM Trisphosphate at pH 7.5, 2% SDS, 0.2 mM Dithiothreitol, 3.6 M Urea, and 15% (v/v) Glycerol.

Quality Control

5 µl of the FastGene® Prestained Protein Marker (15-130 kDa) resolve in 7 bands in SDS-PAGE and are transferred to the blotting membrane after Western Blot.

Concentration

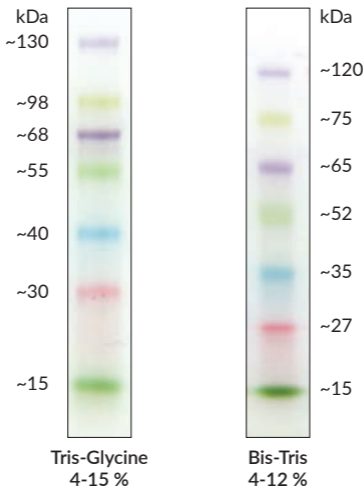
0.2~0.4 mg/ml of each marker protein in storage buffer.

Storage

Stable for up to 3 months at 4°C.

Long term storage at -20°C.

FastGene® Prestained Protein Marker (15-130 kDa)



All products are for research use only and not intended for human or animal diagnostic or therapeutic uses.